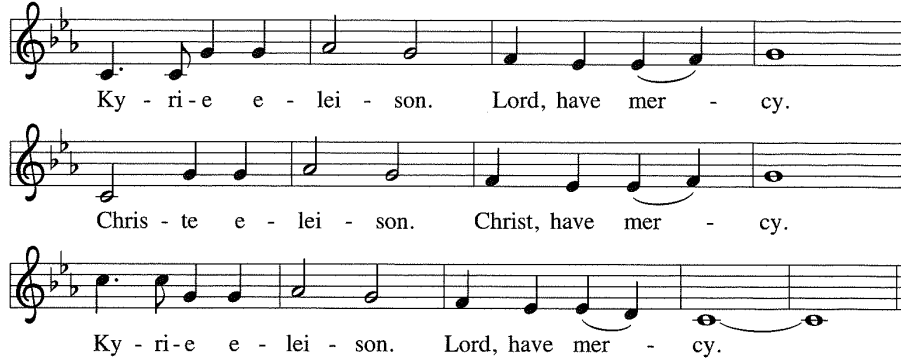


SETTING 12 RESOURCE SHEET (FROM ALL CREATION SINGS, PP. 29-41)

Used by permission: Augsburg Fortress Liturgies Annual License #40267

Kyrie



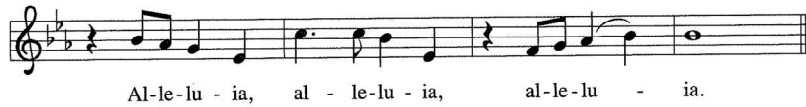
Musical notation for the Kyrie section, consisting of three staves of music in a key signature of two flats (B-flat and E-flat). The lyrics are: Ky - ri - e e - lei - son. Lord, have mer - cy. Chris - te e - lei - son. Christ, have mer - cy. Ky - ri - e e - lei - son. Lord, have mer - cy.

Glory to God

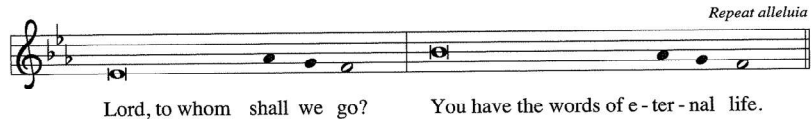


Musical notation for the Glory to God section, consisting of seven staves of music in a key signature of two flats (B-flat and E-flat). The lyrics are: 1 Glo - ry to you, God, for yours is the earth; 2 Glo - ry to you, God, for yours is the earth; 3 Glo - ry to you, God, for yours is the earth; yours is the prom - ise, the bless - ing, the birth. yours the ho - san - nas, the dy - ing, re - birth. yours the a - noint - ing, the ra - di - ant worth. Ours the re - joic - ing for Word giv - en frame; Ours the re - joic - ing for na - ture re - claimed; Ours the re - joic - ing for spir - its a - flame; ours the thanks - giv - ing to your ho - ly name. Ours be the tell - ing of deeds great - ly done; yours be the glo - ry, O God, yours a - lone.

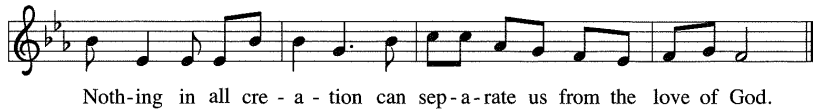
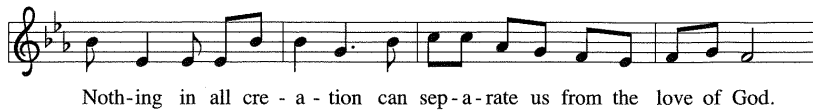
Gospel Acclamation



The proper verse may be sung, or all may sing one of these verses.



Lenten Verse



Holy, Holy, Holy

